

DOVECOTES
and
PIGEONCOTES
in
WORCESTERSHIRE

DOVE AND PIGEON COTES IN, WORCESTERSHIRE

Study by

J. C. Pridham, MRTPI, MIMunE
County Planning Officer
County Buildings
Worcester

Study Team

G. Gooderham, RIBA, Group Leader -
Architectural and Conservation

J.K. Cornelius - Photography

D. Holland-Bowyer - Processing

March 1974

1. Most of the buildings mentioned in this book are in private ownership . Anyone who wishes to visit them should therefore gain permission from the landowners beforehand.

2. Information about any dove or pigeon cotes not mentioned in this selection will be welcomed by the County Planner, also notice of any action which may place one in danger. Correspondence should be addressed to: County Planner, Hereford and Worcester County Council, Farrier House, Farrier Street, Worcester.

The dovecotes and pigeoncotes of Worcestershire have long been an important part of the Worcestershire countryside. This has been shown by the fact that fifty are listed by the Department of the Environment as of Special Architectural or Historic Interest.

However, the condition of the cotes varies from good to ruinous and although several retain their original use, many have been converted to cottages, playrooms or stores and some are unused.

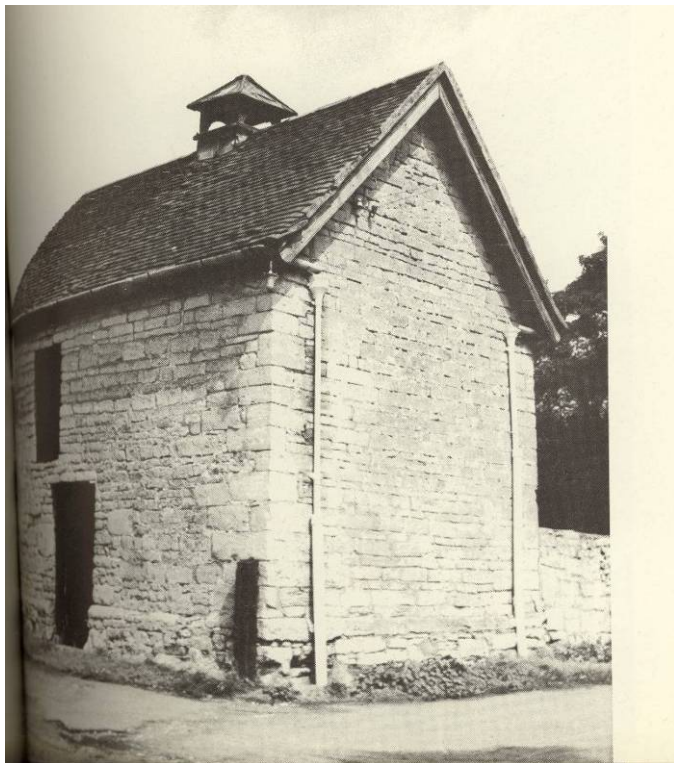
The Planning Officer has, therefore, prepared this illustrated report of a selection of the Worcestershire Cotes and it is hoped that perhaps with help from the County Council the great majority will be preserved.

Where a cote is deteriorating and is considered to be one of the better ones in the County, approaches are being made to the owners by the Planning Officer to ensure its preservation.

The Appendix sets out the details of the cotes and divides them into the following classes :-

- Class I - of national importance
- Class II* - of special regional importance
- Class II - of regional importance
- Class III - of local importance
- Class IV - of group value only

Old Manor House
Ashton-under-hill
PR1



Hardwick Farmhouse
Brendons Hardwick
PR2

Manor House
Bretforton
ER3



Home Farmhouse
Bretforton
ER6

Rear 63-65 Main Street
Bretforton
ER5



ER6

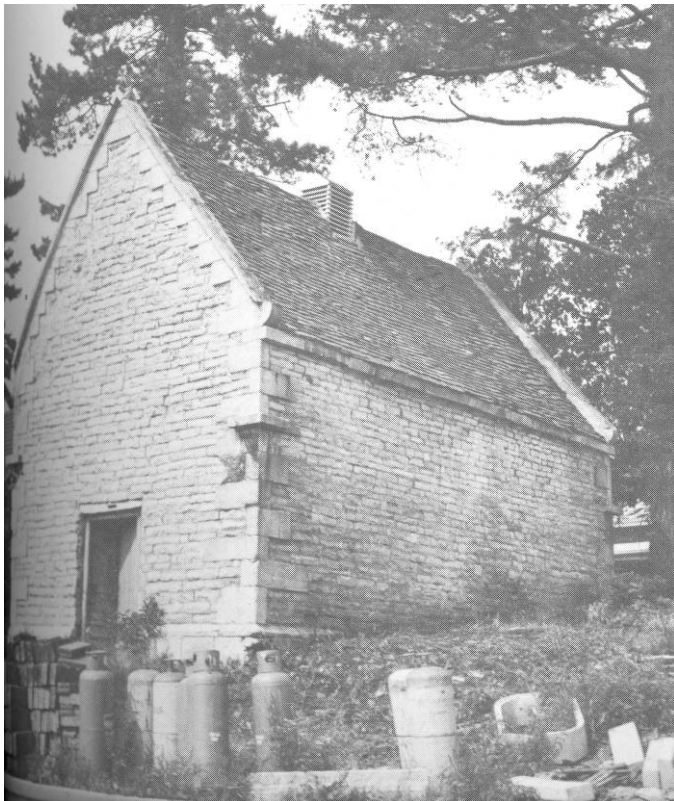
Home Farmhouse
Bretforton

Rear Green Cottage
Cleeve Prior
ER7



Hillend Court
Castlemorton
UR8

Drayton House
Chaddesley Corbett
KR9



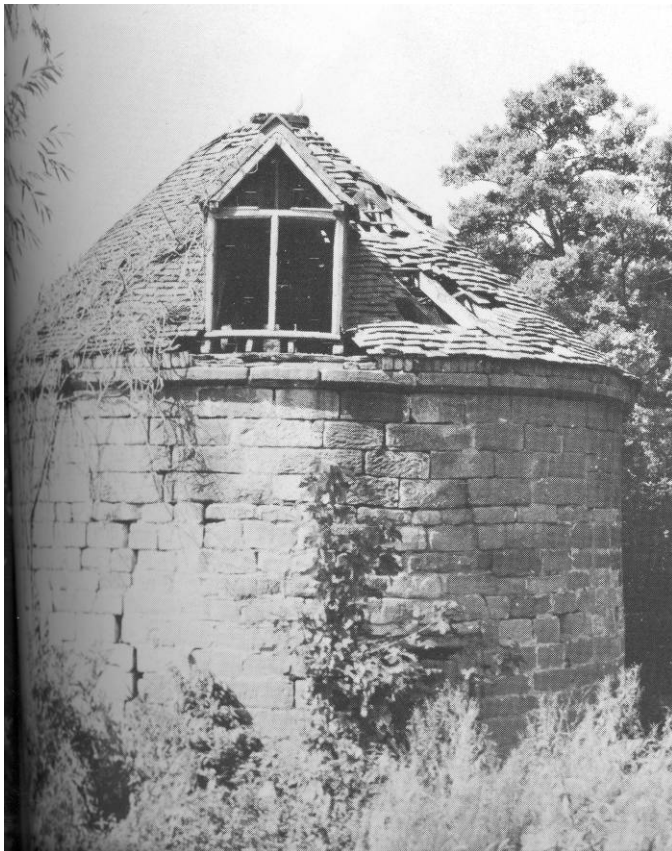
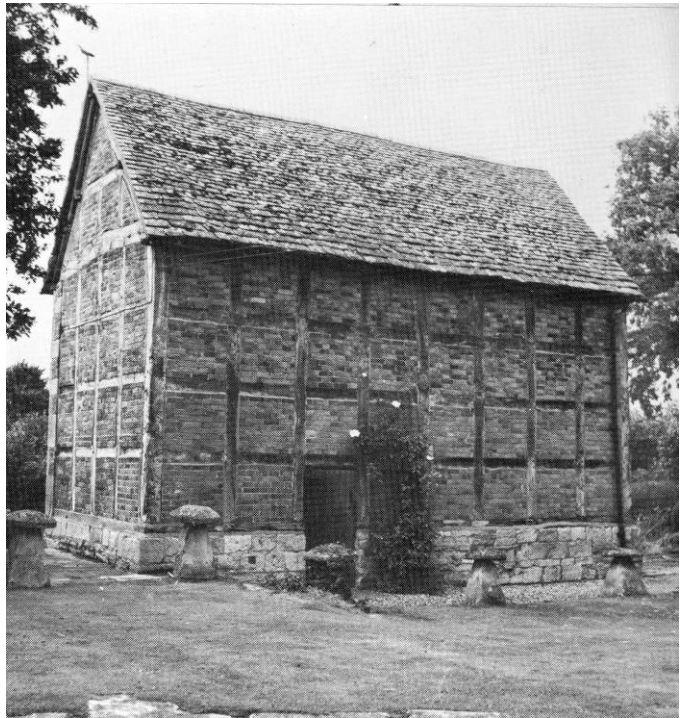
Charlton House
Charlton
PR10

Wood Farm
Churchill
PR11



Manor House
Cleeve Prior
ER12

Rear Columbarry House
Crothorne
PR13

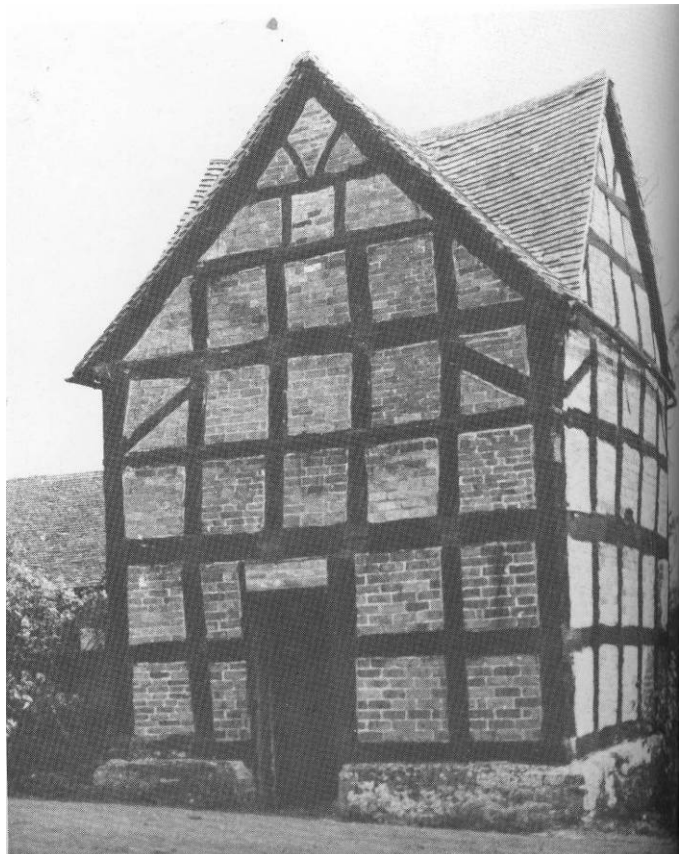


Crafton Manor
Dodford and Grafton
BR14

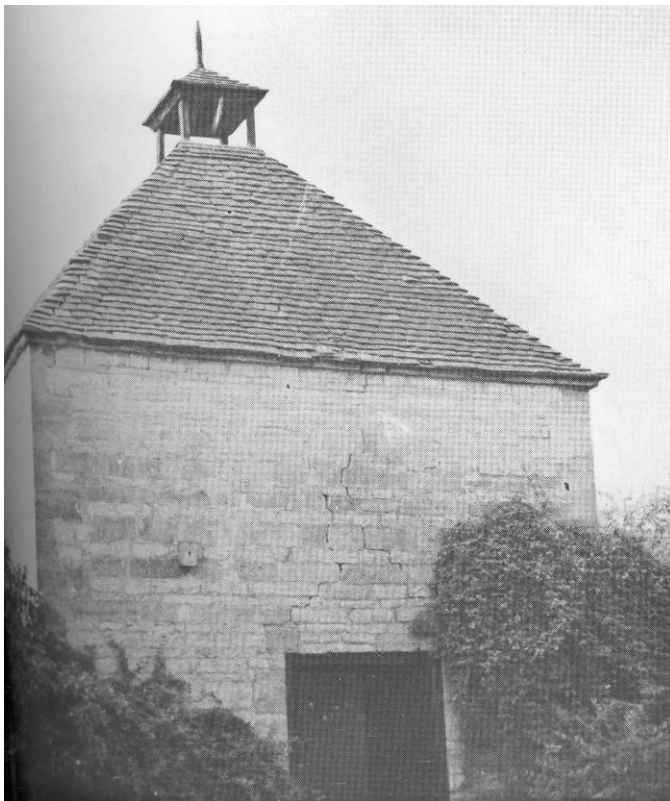


SW Dormston Manor
Dormston
PR15

SE Dormston Manor
Dormston
PR16



Moat Farm
Dormston
PR17



Hermitage Farm
Wadborough
PR18



St. Peter's Manor
Droitwich
DB19

Pigeon House Farm
Eldersfield
UR20



Eastington Hall
Longdon
UR21



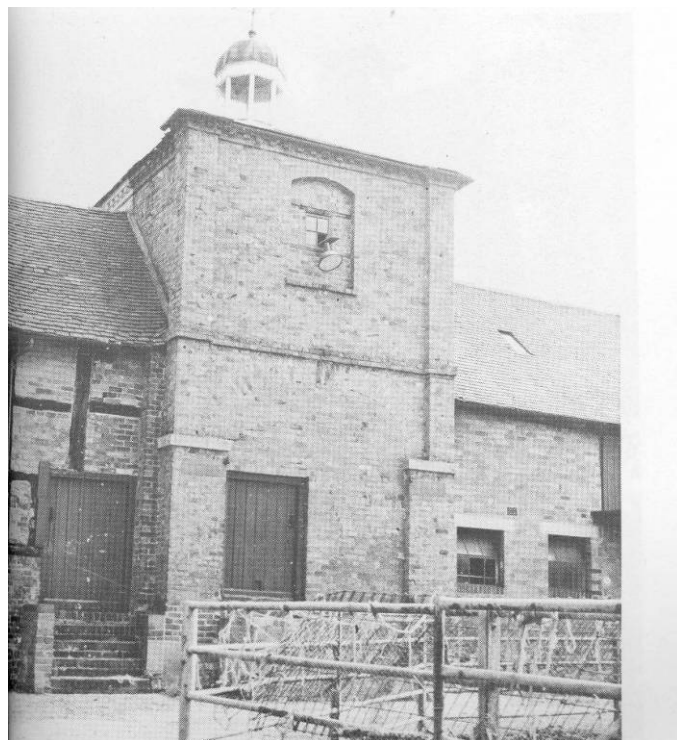
South of Church
Elmley Lovett
Dr22

Newhouse Farm
Elmley Lovett
DR23



Hill Court
Grafton Flyford
PR24

Guarlford Court
Guarlford
UR25



Dripshill Farm Rhydd
Guarlford
UR26

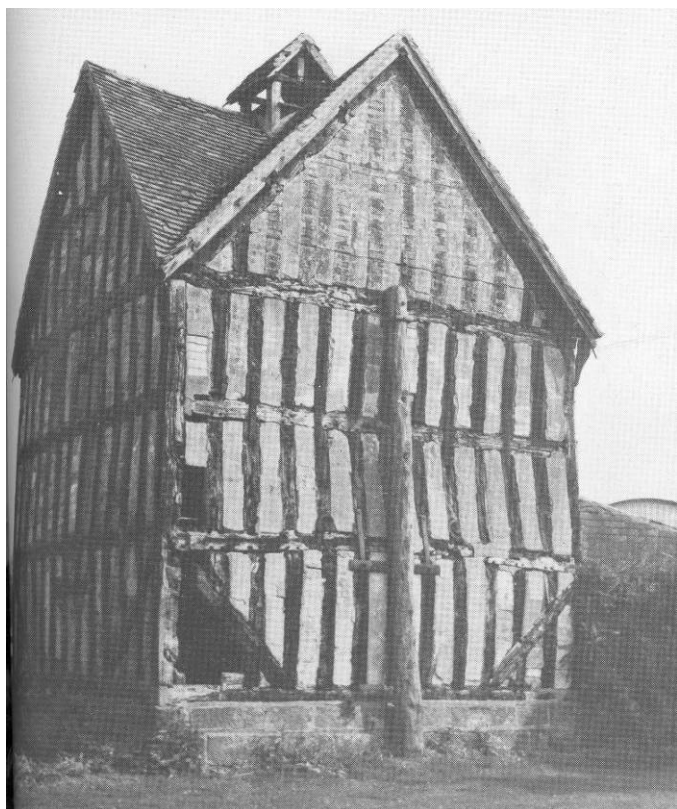


Pumphouse Farm
Hanbury
DR27

Severn End
Hanley Castle
UR28



Manor Farm
Harvington
ER29



Hawford Grange
Ombersley
DR30



NW Court Farm Baughton
Hill Croome
UR31

Glebe Farm
Hill Croome
UR32



Church Farm
Hibleton
DR33



Manor Farmhouse
Himbleton
DR34

Saleway Farmhouse
Himbleton
DR35



Lower Smite Farm
Hindlip
DR36

Manor Farm
Hinton-on-the Green
ER37



Corn Mill
Hinton-on-the Green
ER38



NE huddington Court
Huddington
DR39

NW Huddington Court
Huddington
DR40



Rectory Farm
Kemerton
ER41



Upper Court
Kemerton
ER42



Kyre Park
Kyre
TR43

Pigeonhouse Farm
Leigh
MR44



Leigh Court
Leigh
MR45



Nash's Farm
Little Comberton
PR46



Manor Farm
Little Comberton
PR47

Robert's End
Longdon
UR48



Elderfield Court
Eldersfield
UR49



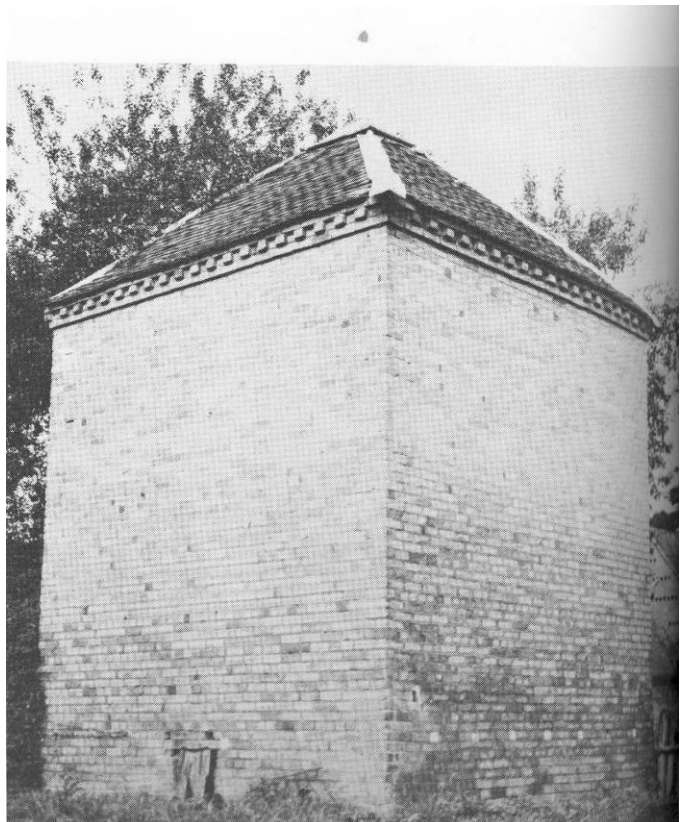
Moat Court
Malvern
MU50

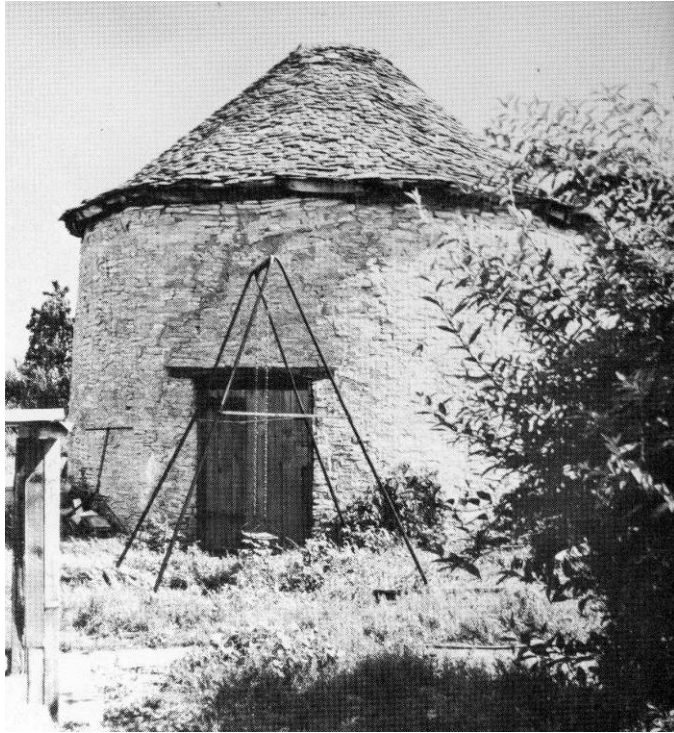


E. Naunton House
Naunton Beauchamp
PR51

Grange Farm
Malvern

MU 52



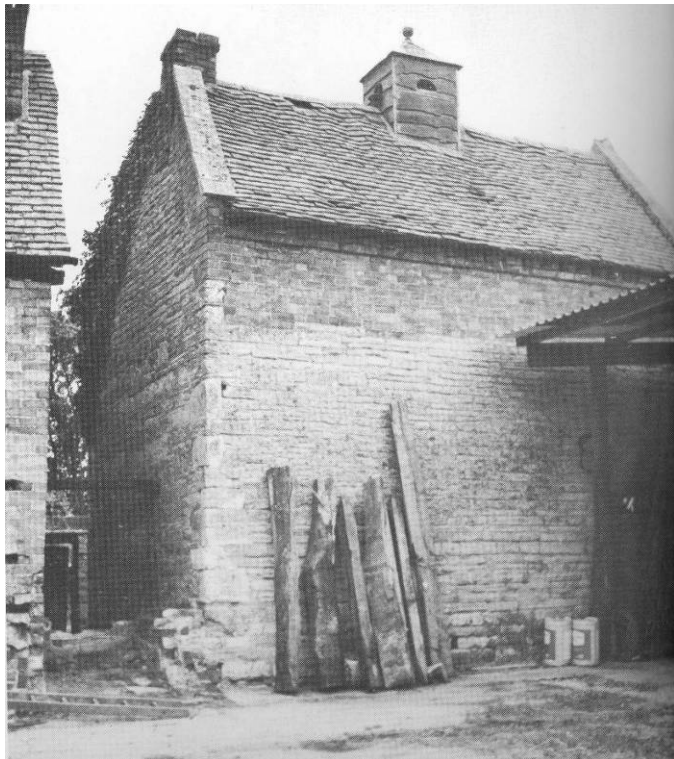
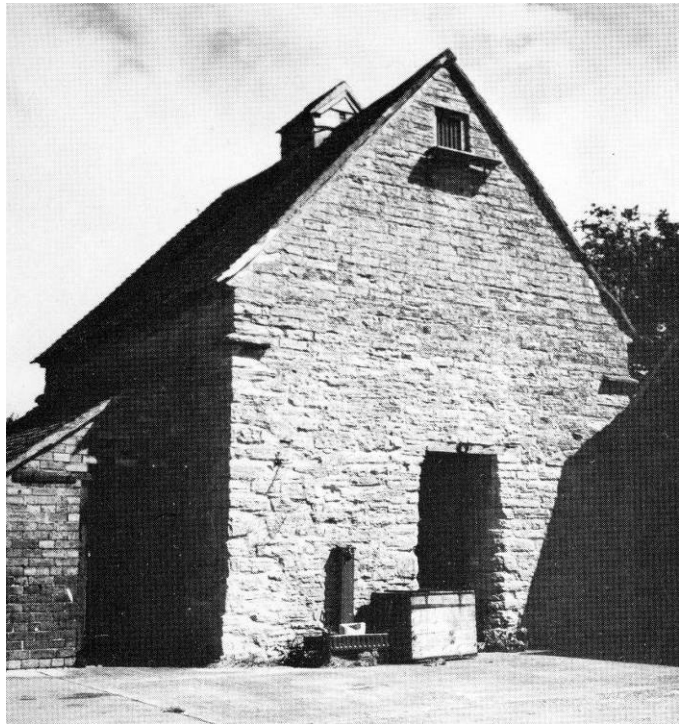


Walnut House
Littleton
ER53

Court Farm
Offenham
ER54



The Priory
Offenham
ER55



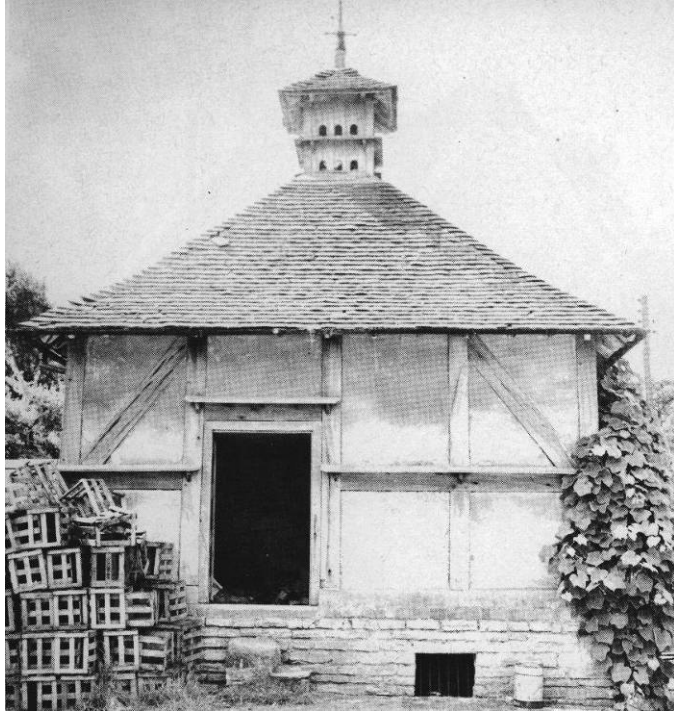
Manor Farm
Pebworth
ER56



Broad Marston Manor
Pebworth
ER57

Baldwin's Farm
Pebworth
ER58



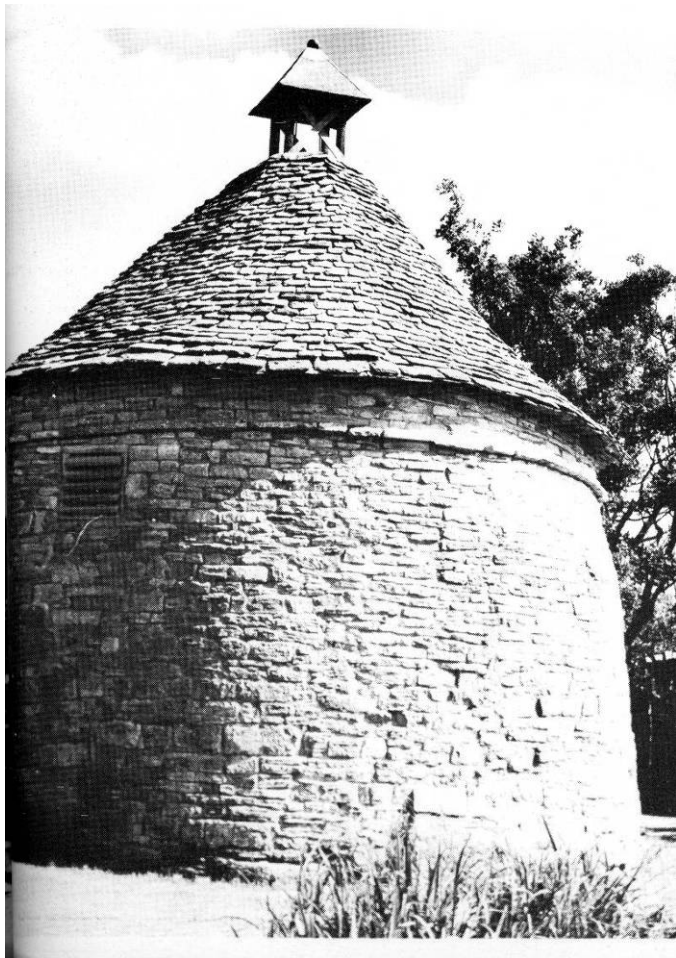


Home Farm
Spetchley
PR59

Green Hayes
Westmancote
PR60



Elm Farm
Wickhamford
ER61

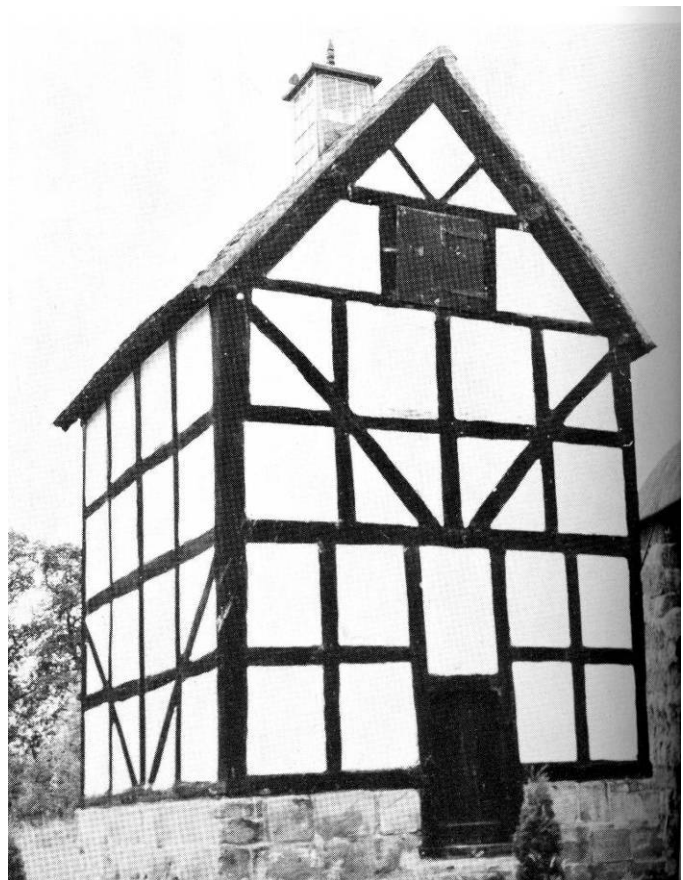


Manor House
Wickhamford
ER62



Knight House
Wolverley
KR63

Wichenford Court
Wichenford
MR64



APPENDIX : DOVECOTES AND PIGEONCOTES IN WORCESTERSHIRE

No.	Parish <u>Address</u>	D of E	Date	Condition	Materials <u>Roof Walls</u>	CC <u>Classification</u>
1	Ashton-under-Hill Old Manor House	II	CI8	Excellent	stone stone slates	II
2	Bredons Hardwick Hardwick Farmhouse	II	C18	Good	tiled stone	II
3	Bretforton Manor House	II	C18	V.Good	stone stone & tiled	II
4	Bretforton Grange Farm	II*	C14	V. Poor	hipped/ stone gable tile	II*
5	Bretforton Rear of 63/65 Main Street	II	C18	Fair	tiled stone	II
6	Bretforton Home Farmhouse No. 41 Main St.	II*	C18/19	V.Poor	stone stone tiled	II*
7	Cleeve Prior Behind Green Cottage	II	"ancient"	V.Poor	tiled stone (gone!)	II
8	Castlemorton Hillend Court (altered externally)	II	Mid C18	Good	new stone tile rf.	II
9	Chaddesley Corbett Drayton House		C19	Good	tile brick	III
10	Charlton Charlton House	II	C17/18	Poor	tiled stone	II
11	Churhhill Wood Farm	II	C17	Good rf.repairs	2 gables tiled brick	II
12	Cleeve Prior Manor House	II*	Medieval	V.Good	stone stone	I
13	Crothorne Rear of Columbarry House	III	C17	V.Good	stone timber frame slate brick infill	II
14	Dodford and Grafton stone Grafton Manor	II*	II	C17	V.Poor	old tiles
15	Dormston South west Dormston Manor .	II	Early C17	Good	tile timber frame pyramid & bk. on stone foundations	II

16	Dormston South east Dormston Manor	II	Early C17	Good	tiles stone foundations timber frame & bk.	II
17	Dormston Moat Farm	II*	C17	Excellent (restored by Avoncroft M.)	tile timber frame pyramid and plaster	II*
18	Drakes Broughton Hermitage Farm Wadborough	II	C17/18	Reasonable	hipped stone tile	II
19	Droitwich St. Peter's Manor	II	C17	Fair	gables brick gabled	II I
20	Eldersfield Pigeon House Farm	II	C17/18	Fair	tiled 4 brick/stone gables plinth	II
21	Longdon Eastington Hall	II	C16	Excellent	conical tiled stone	II*
22	Elmley Lovett South of church (dovecote)		C18	Poor	tiled hipped brick	IV
23	Elmley Lovett Newhouse Farm		C18	V.Poor	tiled stucco over frame	III
24	Grafton Flyford Hill Court	II	Early C17	Good	tiled timber frame gabled and brick	II
25	Guarlford Guarlford Court	III	C18	Fair	tiled brick	III
26	Dripshill Farm		C19	Fair	hipped brick mod slate eaves	III
27	Hanbury Pumphouse Farm	II	Early C17	Fair	gables timber frame old tiles on bk. Plinth	II*
28	Hanley Castle Severn End	II	1677	Fair	tiled mod. eaves bk. gabled 2 stages	II
29	Harvington Manor Farm	II	C18	V. Poor	Cotswold stone stone & tiled	II
30	Hawford Grange Ombersley	II	Late C16	V. Poor	tiled four timber frame & gabled heads plaster on stone foundations	II*
31	Hill Croome North West Court Farm, Baughton	III	C18	Good	tiled - 4 brick gabled gables(house & some timber) attached) frame	III

32	Hill Croome Glebe Farm	Medieval	Being renovated	None	timber frame cruck & bk	II
33	Himbleton Church Farm	II	Early C17	Poor	gables timber frame tiles and bk.	II
34	Himbleton Manor Farmhouse	II	C17	Very bad	gone stone	II
35	Himbleton Saleway Farmhouse	III	C17	Good	tiled timber frame	III
36	Hindlip Lower Smite Farm	II	Early C17	Poor	2 gables timber frame tiled & bk. on bk. foundations	II
37	Hinton-on-the- Green Manor Farm(Pair)	II	Late C17	Fair	tiled stone gabled	II*
38	Hinton-on-the-Green Corn Mill	III	C18	Fair	tiled rubble & bk timber frame	III
39	Huddington North east Huddington Court	II	Early C17	Good	on stone tiled foundations	II
40	Huddington North west Huddington Court	II	Early C17	Good	tiled, timber frame on stone	II
41	Kemerton Rectory Farm	III	C17/18	Reasonable	tiled, stone (1 bk.) Cots.stone	III
42	Kemerton . Upper Court	III		Excellent	Cots. stone stone	II*
43	Kyre Kyre Wyard Park	II	Medieval	Good	(later dormers) tiled stone – gables	II*
44	Leigh Pigeonhouse Farm Brockamin	II	Early C16	V.Poor	tiled timber frame with bk-. Infill	II
45	Leigh Leigh Court		Early C19	Fair	hipped brick tiled	II
46	Little Comberton Nash's Farm	II	C17	Excellent	conical stone moulded tiled cornice	II*
47	Little Comberton Manor Farm	II	C17	Poor	gabled tiled stone	II

48	Longdon East Roberts End	II	C17/18	Fair	hipped timber frame tiled & bk. Infill	II
49	Eldersfield Eldersfield Court	II	C16/17	Fair	tiled timber frame (fox weather vane)	II
50	Malvern Moat Court, Sherrards Green	II	C17	Poor	old tiles brick	II
51	Naunton Beauchamp Naunton House (East of House)	II	C17	Fair	tiled - timber frame hipped and brick	II
52	Newland Grange Farm		Early C19	Poor	hipped bk. - mod. tiled eaves	III
53	Littleton North Littleton Walnut House	II	C13	Poor	stone slates stone	II*
54	Offenham Court Farm	II*	C16	Poor	4 gables stone slates stone	II*
55	Offenham Priory	II	C18	V. Good	tiled stone	II
56	Pebworth Manor Farm	II	C18/19	Poor	stone red tiled bk. above	II
57	Pebworth Broad Marston Manor	II		Good	slate stone gables	II
58	Pebworth Baldwin's Farm			Fair/poor	stone tiled bk. Quoins	III
59	Spetchley Home Farm	II	C17/18	Fair	hipped timber frame tile plaster infill	II
60	Westmancote Green Hayes	II	C17	Excellent	tiled stone coped gables	II
61	Wickhamford Elm Farm	III	C18	V. Poor	tiled stone (falling)	
62	Wickhamford Manor House	II	C13	V.-Good	stone slaters stone	II*
63	Wolverley Knight House	II	C19/20	V. Poor To be restored	tiled bk. with some circular wds	II
64	Michenford Wichenford Court tiled	II*	C17	V. Good	tiled timber frame on stone plinth	II*

I
I
II
II*
II*
II
II
III
II
II
III
II*
II
II*

